



Castles

CASTLE CLOSE  
Totternhoe, Bedfordshire



# CASTLE CLOSE

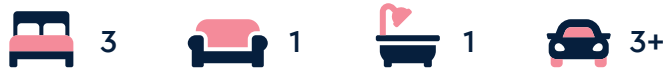
Totternhoe, Bedfordshire

Asking  
Price  
**£475,000**  
(Freehold)

Castles



Occupying a prime position on a quiet road in Totternhoe, this deceptively spacious chalet bungalow enjoys far-reaching views.



Upon entering, you are welcomed by a generous entrance hall leading to a double bedroom at the front of the property, ideally situated next to a modern downstairs bathroom. The lounge features patio doors which open onto the rear garden, creating a bright and inviting living space. There is a separate dining room to the front of the property. The kitchen, located at the rear, opens onto an extended lean-to which is ideal for storage.

Upstairs, the accommodation continues with a further two double bedrooms making the home ideal for flexible living arrangements.

## Specifications

- Far reaching views
- 3 Double Bedrooms
- Downstairs family bathroom
- Garages with ample parking space on drive
- Tiered rear garden with generous patio area





Externally, the tiered rear garden boasts a patio area. Additional benefits include a single garage and ample driveway parking for multiple vehicles.





**Please Note:**

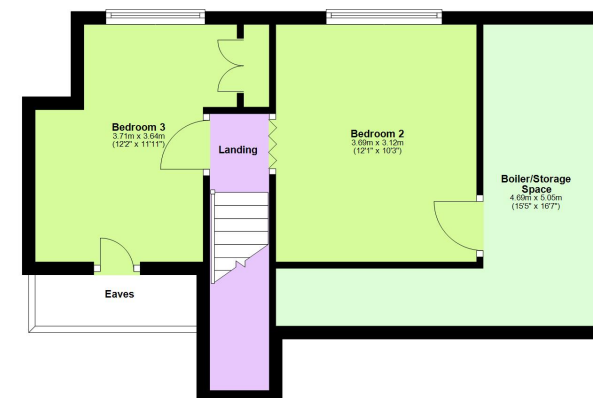
We have not tested any apparatus, fixtures, fittings or services. Interested parties must undertake their own investigation into the working order of these items.

All measurements are approximate and photographs provided are for guidance only.

**Ground Floor**  
Approx. 94.2 sq. metres (1014.3 sq. feet)



**First Floor**  
Approx. 40.3 sq. metres (433.8 sq. feet)



**Tenure:** Freehold  
**Council Tax Band:** E  
**EPC Rating:** E

Total area: approx. 134.5 sq. metres (1448.1 sq. feet)

**Berkhamsted**  
01442 865252

**Eaton Bray**  
01525 220605

**Borehamwood**  
020 8953 2112

**Hertford**  
01992 501511

**Boxmoor**  
01442 233345

**Kings Langley**  
01923 936900

**Bushey**  
020 8950 2551

**Radlett**  
01923 537111



**Castles**