



Castles

HUNTERS OAK
Hemel Hempstead HP2 7SY

HUNTERS OAK

Hemel Hempstead HP2 7SY

O.I.E.O
£375,000
(Freehold)

Castles



This two bedroom end of terrace home is presented in fantastic order throughout.



Offering bright and spacious accommodation and situated in this ever popular residential area of Hemel Hempstead.

The ground floor hosts a large living room which leads in to a modern fitted kitchen with plenty of dining space. The kitchen, with a range of worksurfaces and cupboards enjoys views out to the rear garden.

To the first floor, two large bedrooms can be found. Both flooded with natural light. The family sized bathroom with white suite completes the layout of this floor.

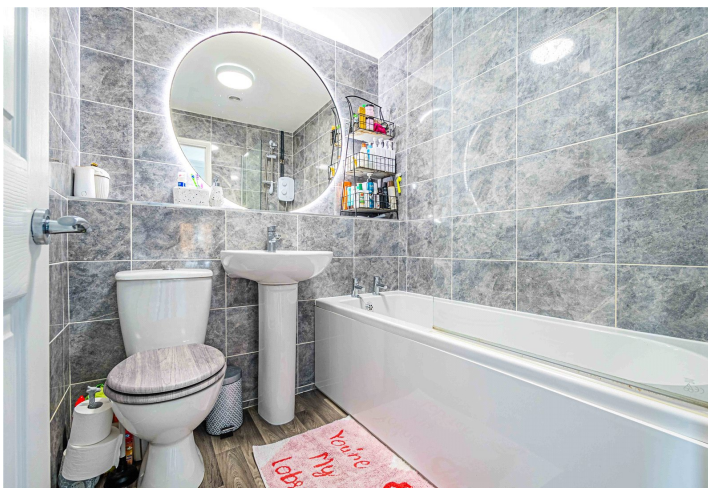
Within just a few moments walks of the property is the Nicky Line which is a nature walk taking you in central Hemel Hempstead or to Redbourn and Harpenden.

Specifications

- LARGE 2 BEDROOM HOME
- BRIGHT RECEPTION ROOM
- MODERN FITTED KITCHEN
- SUNNY GARDEN
- OFF ROAD PARKING
- POPULAR RESIDENTIAL AREA



Other features include off road parking, sunny rear garden and fitted wardrobes in both bedrooms.



A little about the corner of the world we call home...

Located 24 miles north of London, Hemel Hempstead and the surrounding villages offer a great place to live whilst being close enough to the City to have a commutable journey for work or pleasure. London Euston can be reached in as little as 25 minutes from Hemel Hempstead station. The town is also ideally placed for road links with the M1, M25 and A41 motorways all accessed from the Town within just a few minutes, London Heathrow and London Luton airports are also less than 40 minutes away.

Historically significant Hemel Hempstead dates back almost 1000 years, the town has a great selection of character properties

along with many newer styles which were added after the Second World War. Hemel Hempstead sits within the Gade Valley and is surrounded by the Chiltern Hills which offer some of the best open countryside, much of which is classed as an area of outstanding natural beauty. Hemel Hempstead is a great place to raise a family with some of the finest state and independent Schools anywhere in the country. The town also has a great array of leisure facilities such as the Snow Centre, XC Centre, Public Swimming Pools, 17 Screen Cinema plus lots of restaurants, pubs and bars. Just a few minutes drive way is the City of St Albans, market town of Berkhamsted and the larger shopping town of Watford.

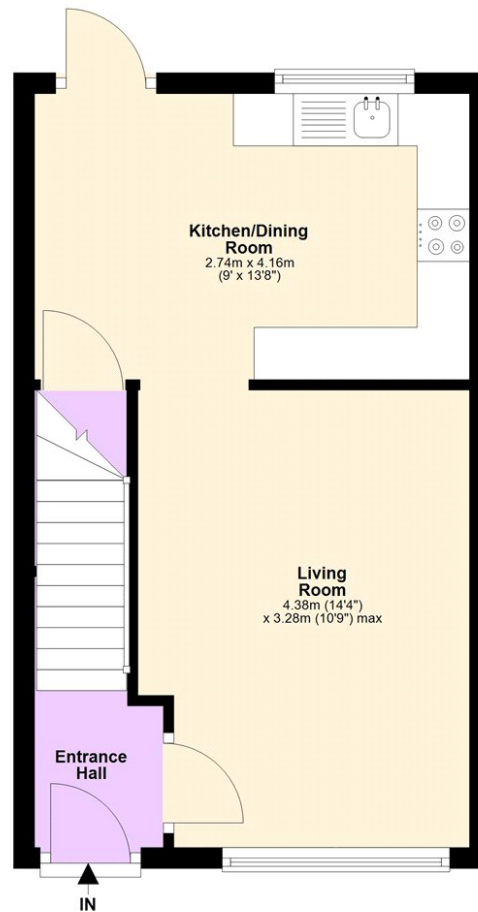
Please Note:

We have not tested any apparatus, fixtures, fittings or services. Interested parties must undertake their own investigation into the working order of these items.

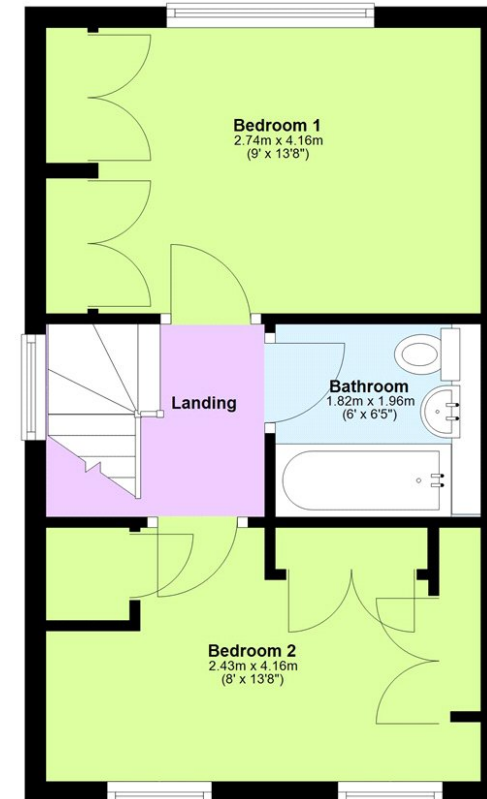
All measurements are approximate and photographs provided are for guidance only.

Tenure: Freehold
Council Tax Band: D
EPC Rating: C

Ground Floor
Approx. 29.9 sq. metres (322.3 sq. feet)



First Floor
Approx. 29.9 sq. metres (322.0 sq. feet)



Total area: approx. 59.9 sq. metres (644.3 sq. feet)

Berkhamsted

01442 865252

Eaton Bray

01525 220605

Borehamwood

020 8953 2112

Hertford

01992 501511

Boxmoor

01442 233345

Kings Langley

01923 936900

Bushey

020 8950 2551

Radlett

01923 537111



rightmove

Castles

www.castlesestateagents.co.uk