



Castles

HAXTERS END
Berkhamsted, Hertfordshire HP4 3FJ

HAXTERS END

Berkhamsted, Hertfordshire HP4 3FJ

Asking
Price
£550,000
(Freehold)

Castles



CASTLES are happy to present this Stylish, Spacious, and ready to move into – Three-Bedroom Mid-Terrace family home, with the perfect blend of comfort and convenience in the heart of Berkhamsted!



Step inside and you're welcomed by a bright Entrance Hall, setting the tone for the light-filled spaces throughout. At the front, the contemporary Kitchen/Breakfast room is perfect for morning coffee or catching up over dinner prep, while at the rear, the expansive Lounge/Dining room flows seamlessly into the Garden through French Doors – ideal for entertaining friends or letting the children play. A handy cloakroom/WC completes the ground floor.

Upstairs, the generous main Bedroom offers a calming retreat, joined by Two further Bedrooms perfect for family, guests, or a home office. The sleek family bathroom keeps mornings stress-free for everyone.

Outside, a private rear garden with patio and lawn is made for sunny barbecues, while Off-Road Parking at the front means no more hunting for a space.

Perfectly positioned in a modern, sought-after development, you're just a short walk from local schools, shops, and green spaces. Commuters will love the quick access to the A41, M1, and M25, plus Berkhamsted's mainline station whisking you to London Euston in under 40 minutes.

Specifications

- STYLISH THREE-BEDROOM MID TERRACE HOME
- LOUNGE/DINER WITH FRENCH DOORS TO GARDEN
- MODERN KITCHEN
- DOWNSTAIRS CLOAKROOM AND W/C
- PRIVATE REAR GARDEN
- OFF-ROAD PARKING
- SOUGHT-AFTER LOCATION.
- POTENTIAL FOR 50% PURCHASE ON A S/O SCHEME



Available with full or 50% shared ownership, this home offers an affordable route onto the property ladder without sacrificing space or location



A little about the corner of the world we call home...

Berkhamsted is an historic market town nestled at the feet of the Chiltern Hills, a designated area of outstanding natural beauty. Berkhamsted lies in the Bourne Valley. The town is located 26 miles northwest of London. The high street is on a pre roman route to London with lots of interesting architectural styles, our own office sits in a building well over 200 years old. Berkhamsted dates back to about 1000 AD and was mentioned in the doomsday book of 1086 and has its own Castle, sadly just ruins now as it was abandoned in 1495, it now belongs to the Dutchy of Cornwall and is looked after by English Heritage – the site is often used for events. Just off the High Street is the Grand Union Canal and the

Train Station which offers a frequent service in under 30 minutes to London Euston. The Town Centre has a range of independent and boutique retailers as well as national retailers such as Marks & Spencers and Waitrose. Berkhamsted is home to some of the best schools in the area, the Berkhamsted School is an independent day and boarding school dating back to 1541 with famous alumni such as Clementine Churchill, Will Fraser and more recently Roman Kemp. The town is also home to the British Film Institute and can often be seen for location filming for TV and Film. Berkhamsted really is a wonderful place to raise a family, commute into the City, check out the countryside or simply enjoy a coffee or glass of prosecco and watch the world go by.

Please Note:

We have not tested any apparatus, fixtures, fittings or services. Interested parties must undertake their own investigation into the working order of these items.

All measurements are approximate and photographs provided are for guidance only.

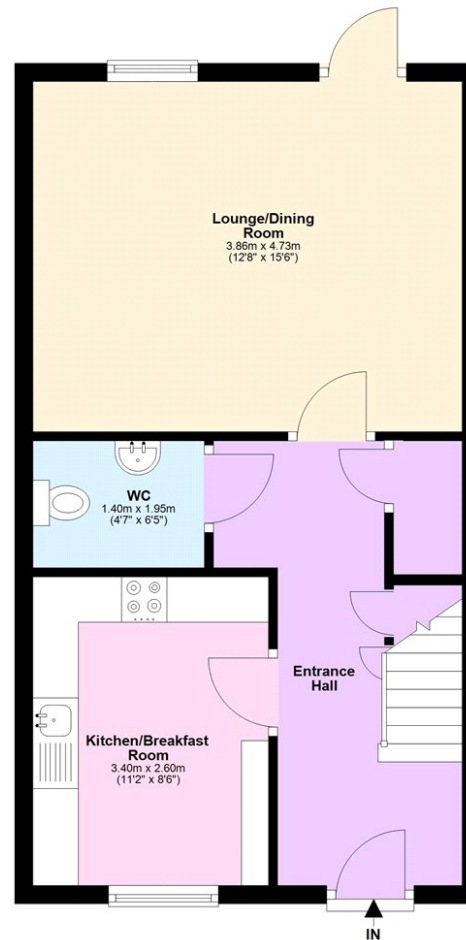
Tenure: Freehold

Council Tax Band: D

EPC Rating: A

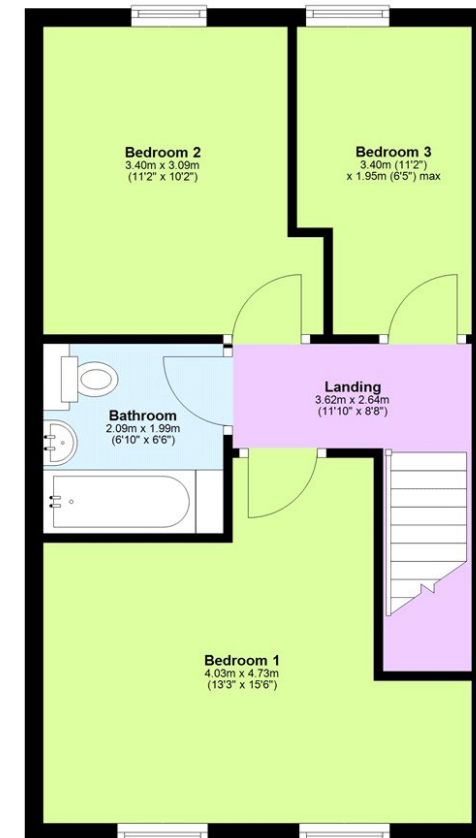
Ground Floor

Approx. 42.1 sq. metres (452.9 sq. feet)



First Floor

Approx. 41.7 sq. metres (448.9 sq. feet)



Total area: approx. 83.8 sq. metres (901.8 sq. feet)

Berkhamsted

01442 865252

Eaton Bray

01525 220605

Borehamwood

020 8953 2112

Hertford

01992 501511

Boxmoor

01442 233345

Kings Langley

01923 936900

Bushey

020 8950 2551

Radlett

01923 537111



rightmove

Castles

www.castlesestateagents.co.uk