



Castles

OAKWOOD AVENUE
Borehamwood, WD6 1SS

OAKWOOD AVENUE

Borehamwood, WD6 1SS

£725,000
(Freehold)

Castles



A delightful three-bedroom semi-detached family home in a coveted cul-de-sac with exciting potential to extend (STTP) and create your dream family home.



Tucked away in a tranquil and highly desirable cul-de-sac on the sought-after south side of Borehamwood, this charming property offers the perfect setting for family living.

Its prime location provides easy access to renowned local schools, including the highly regarded Yavneh College, as well as the vibrant town centre and mainline station, ensuring convenience for both work and play.

Whilst in need of some modernisation the property features two good-sized reception rooms and a fitted kitchen on the ground floor all accessed off an inviting entrance hall. The first floor offers two double bedrooms, a single bedroom, family bathroom and a separate WC.

Externally, the home is complemented by a detached garage with store room and carport, along with a private driveway offering ample parking. The well-maintained rear garden provides a peaceful oasis for outdoor enjoyment, perfect for family gatherings or quiet moments of retreat.

Borehamwood has excellent transport links with a mainline station with direct links to Central London as well as the A1 and M25 Motorways on the doorstep. The bustling high street offers restaurants, cafes and local shops while The Boulevard has a plethora of larger chain stores.

This lovely family home offers an exceptional opportunity to move in and make it your own and is being sold CHAIN FREE.

Specifications

- Semi-detached house
- Three bedrooms
- Two reception rooms
- Kitchen
- Bathroom & WC
- Detached garage & car port
- Private rear garden
- Extension potential
- Sought-after location
- No chain



The private rear garden offers a peaceful outdoor retreat, perfect for relaxing, entertaining, or family enjoyment throughout the seasons.



A little about the corner of the world we call home...

Borehamwood is a lively town in Hertfordshire, located just 12 miles northwest of Central London. Known for its rich history in film and television, it's home to Elstree Studios, where iconic shows and movies have been filmed. Borehamwood offers a blend of suburban comfort with easy access to the excitement of the capital. There are plenty of local amenities, from bustling shopping areas to parks like Aberford Park, perfect for families and those looking to enjoy some outdoor space. The town also boasts a selection of restaurants, cafés, and leisure activities, such as the Reel Cinema and the Venue Leisure Centre.

Commuting from Borehamwood to London is simple and convenient. Elstree & Borehamwood station is on the Thameslink line, offering direct trains to St Pancras International in around 20 minutes, making it ideal for professionals working in the city. With frequent train services, it's easy to reach major London hubs, as well as other destinations along the Thameslink route. Its close proximity to the M25 and A1 also makes Borehamwood well-connected for drivers. This combination of excellent transport links and a thriving community makes it a popular choice for those looking for the best of both worlds – suburban peace with quick access to London.

Please Note:

We have not tested any apparatus, fixtures, fittings or services. Interested parties must undertake their own investigation into the working order of these items.

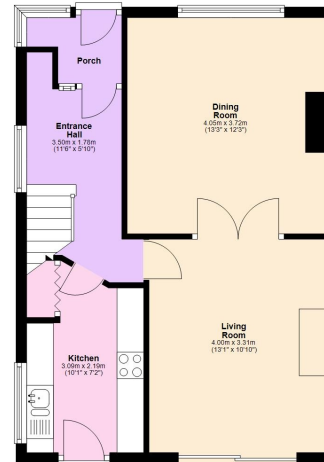
All measurements are approximate and photographs provided are for guidance only.

Tenure: Freehold

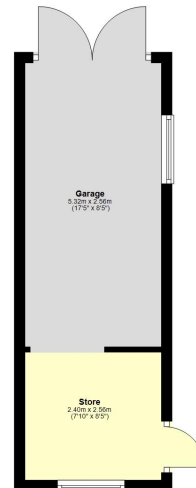
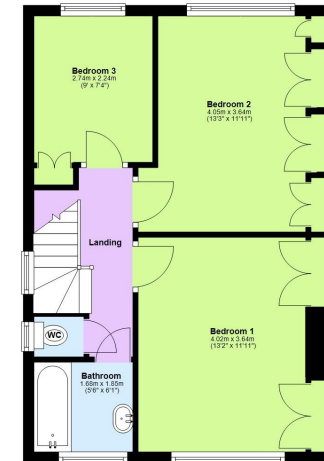
Council Tax Band: E

EPC Rating: TBC

Ground Floor
Approx. 65.7 sq. metres (706.8 sq. feet)



First Floor
Approx. 45.7 sq. metres (491.4 sq. feet)



Total area: approx. 111.3 sq. metres (1198.2 sq. feet)

Berkhamsted

01442 865252

Eaton Bray

01525 220605

Borehamwood

020 8953 2112

Hertford

01992 501511

Boxmoor

01442 233345

Kings Langley

01923 936900

Bushey

020 8950 2551

Radlett

01923 537111



Castles

www.castlestateagents.co.uk